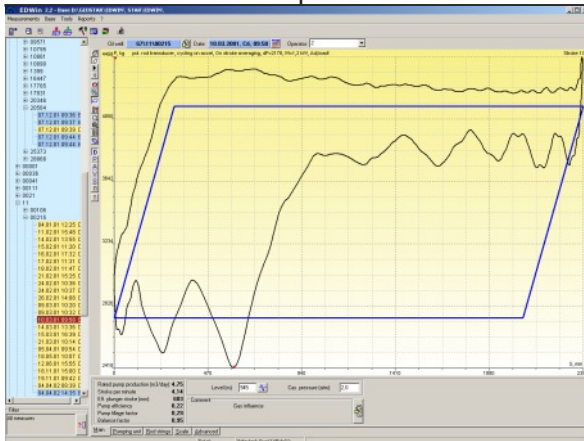


EDWin SOFTWARE

WELL RESEARCHES

EDWin for GEOSTAR-111 (Echo-dynamometer system) ECHO & DYNA CARDS PREPARATION



USAGE

Software is designed to process the measurements received from echo-dynamometer system GEOSTAR-111/112.

APPLICATION

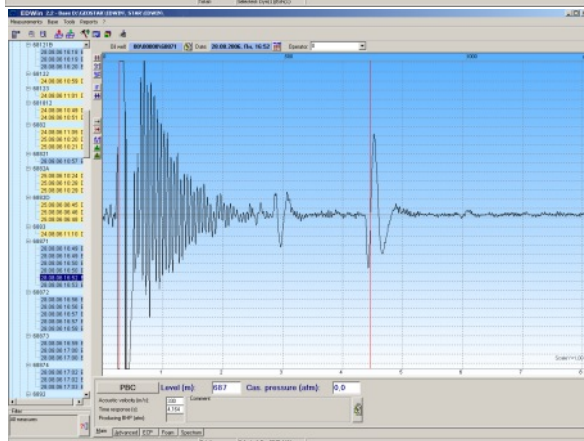
Used by oil production departments, research and development (R&D) departments and well logging departments in the oil&gas producing companies.

ADVANTAGES

- 4-th level view of measurements (treeview style)
- Graphic intuitive interface
- Powerful report designer
- Export data to any format of customer
- Networking support
- Multi-user mode support
- Free monthly updates

FUNCTIONS

- **Flexible filter for measurements – by date, by type (echo, dyna), by subtype (echo kind, dyna device), by operator, by device number, by recents and etc.**
- Flow rate estimation, effective plunger stroke and pump fillage calculation
- Theoretic dynamometer card calculation and rod stress calculation
- Acoustic velocity calculation (on gas composition)
- **Joints collars view (zoom dialog and full view)**
- Pumping unit malfunction determination
- **Gaseous liquid column estimation**
- Pump card calculation and analysis
- **Level buildup curve creation and bottomhole pressure calculation**
- Export the measurements to JPEG, RTF files
- Export the measurements to MS Excel
- Print the large variety of the graphic and text-table reports
- Checking for the names of newcoming measurements to avoid the operator faults
- Archiving (removing) of old and outdated measurements
- Export / import for transfer file to carry the measurements
- Support for the huge pumping unit base (1200 units)
- Echo graph filtering from noise
- **Export measurements to the customer's DBMS (on request)**
- Spectral analysis for echo graph



Measurements filter

Date: All measurements
 Date range: from: 16.08.2004 to: 16.09.2004
 For day: 16.09.2004
 For recent: 7 days

Any: By operator: By device number: 3128
 Not exported measurements
 Expoted measurements

Kind: All measurements
 Only gcho cards
 Only dyna cards

Recent received measurements: From 16 ceh 04 - 02:30, RU 3032.0p, 1121f

Place: Oilfield: Well cluster: Oilwell: 614

Buttons: Filter On, Filter Off, Cancel, Help

