
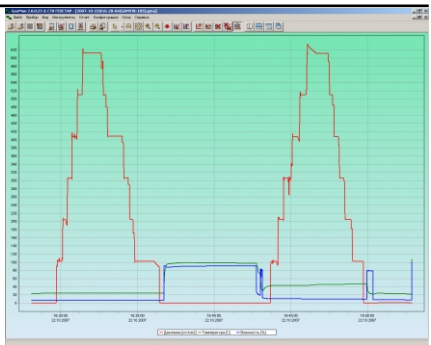


DEVICES	GEOSTAR Series
	WELLHEAD PRESSURE GAUGE GS-AMTU
	APPLICATION Device is designed to register the pressure and temperature values. Used for oil and gas well diagnostic surveys and for the pipeline industry.
	USAGE Used by oil production, research and development (R&D) and well logging departments in the oil&gas producing companies.
	ADVANTAGES <ul style="list-style-type: none"> ■ High mean time between failures ■ Automation for Level buildup curve registration ■ Integration with flowmeter counter ■ Various connection interfaces: <ul style="list-style-type: none"> - for remote units: RS-485, current out 4..20 mA, wireless - for on-line control: RS-232, 4..20 mA ■ Small overall dimensions: length 12 cm, weight 400 gm. ■ Maintainability, reliability

- FUNCTIONS**
- Device is operated on user-defined time scheme
 - Several mode of device starting
 - Transfer of registered data into computer for further preparation and analysis.
 - Software GEOMan allows:
 - to setup for gauge and check the battery
 - to read all the registered data
 - to make the flexible built-in and user-designed reports
 - to export data to *.TXT, *.LAS, *.XLS



Software GEOMan 2.0

SPECIFICATION	
Pressure channel	
Measured range, MPa	0...25,40,60,100
Accuracy, % F.S.	0.25
Resolution, MPa	0.001
Temperature channel	
Measured range, °C	-40..+100
Accuracy, °C	± 1
Flash-memory capacity, records	1.000.000
Sample rate	1 sec .. 18 hr
Connection interfaces	RS232/RS485/Handheld
Connection thread	M20*1,5
Voltage, V	1.4-5.6
Batteries, pcs	2 AA-type
Consumption current, mA	0,6
Time scheme strings capacity	256
Time capacity on time interval 1 sec., days	12
Overall dimensions, mm	60x40x125
Weight, gm	400
Vulnerability category	IP68
Explosion-proof construction	1ExdIIT4